

MARTINUS 

PLANT AND EQUIPMENT



MARTINUS

Martinus has invested significantly to create the largest private fleet of critical railway construction plant and equipment in the southern hemisphere.

Our experience in delivering large scale railway infrastructure has taught us that access to a readily available fleet provides several key advantages:

- ▶ Reliability
- ▶ Cost efficiency
- ▶ Project control
- ▶ Customisation
- ▶ Adaptability
- ▶ Timely delivery

The Martinus-owned fleet is fully supported by a dedicated in-house plant management team who manage the asset lifecycle from procurement and logistics to operations and maintenance.

Our workshop is located in Brisbane. The facility includes a maintenance team of fitters, project managers, engineers and support staff. This enables us to overhaul machinery from one project to the next.

[Click here to view our short video on Martinus' specialised track machinery](#)



SPECIALISED TRACK MACHINERY



SMD-80G HIGH PRODUCTION TRACK LAYER WITH CONSIST



WAGONS



HIGH PRODUCTION SLEEPER LAYER



FLAT WAGONS



RRV SHUNTERS



CONTINUOUS TRACK LIFTER



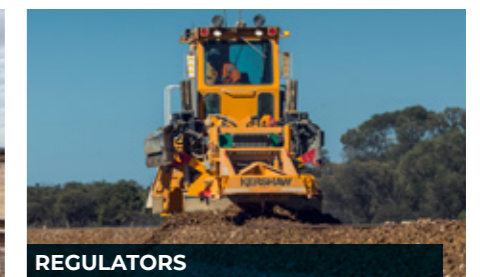
TRACK LAYING POINTS SYSTEM (TLPS) 2500



PEM-LEM MODULAR PANEL AND TURNOUT INSTALLATION SYSTEM



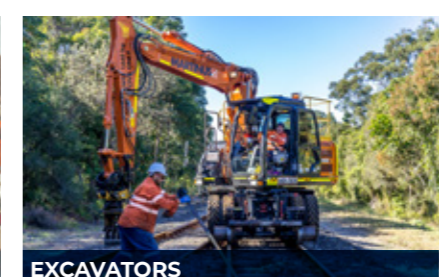
TAMPERS



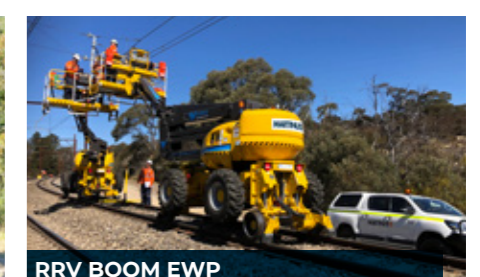
REGULATORS



FLASHBUTT WELDING UNITS



EXCAVATORS



RRV BOOM EWP

MAKE	ALLOWAY HYDRAULICS AND ENGINEERING
Quantity	1
Description	Crawler mounted Auto Sleeper Layer
Year	2014
Rebuilt Year	2020
Rebuild Information	Reprogrammed and modified
Dimensions	20,000 x 4,200 x 3,900 (coupled with CAT 320D Exc)
Weight	48t
Braking System	Excavator Track System
Safety Features	<ul style="list-style-type: none"> ▶ External E-Stop System with failsafe ▶ Deadman switch
Travelling Speeds	10km/h (towed)
Production Rates	400m/h
Major Features	<ul style="list-style-type: none"> ▶ High sleeper laying accuracy @ 17 sleepers per minute ▶ Tri Gauge convertible ▶ Towed and loaded by CAT 320D Excavator with extra wide crawler tracks

HIGH PRODUCTION SLEEPER LAYER



SMD-80G HIGH PRODUCTION TRACK LAYER WITH CONSIST

MAKE	SMD-80G PLASSER	PLASSER GANTRY CRANES	UKK FLAT WAGON
Year	<ul style="list-style-type: none"> ▶ Overhaul 2020 ▶ Built 1985 	<ul style="list-style-type: none"> ▶ Overhaul 2020 ▶ Built 1985 	<ul style="list-style-type: none"> ▶ Overhaul 2020 ▶ Built 1971 -1981
Weight	120t and 32 x 16t wagons	14t	16t TARE
Braking System	Westinghouse System/Hydraulic when in work mode	<ul style="list-style-type: none"> ▶ Hydraulic ▶ Wheel and multi-disc braking 	▶ Pneumatic failsafe
Safety Features	<ul style="list-style-type: none"> ▶ External E-Stop System with failsafe ▶ External Workshop System ▶ Cameras front and rear, fire detection ▶ Track Laying assembly line with no hindrance to adjacent track ▶ Self propelled 	<ul style="list-style-type: none"> ▶ External E-Stop System with failsafe ▶ Collision Avoidance System 	▶ Spring park brake with pneumatic release
Travelling Speeds	30km/h	10km/h on custom wagon mounted crane rail system, for sleeper loading and transfer	60km/h after dynamic track testing
Capacity	300m/h	WLL 6.9t	42t



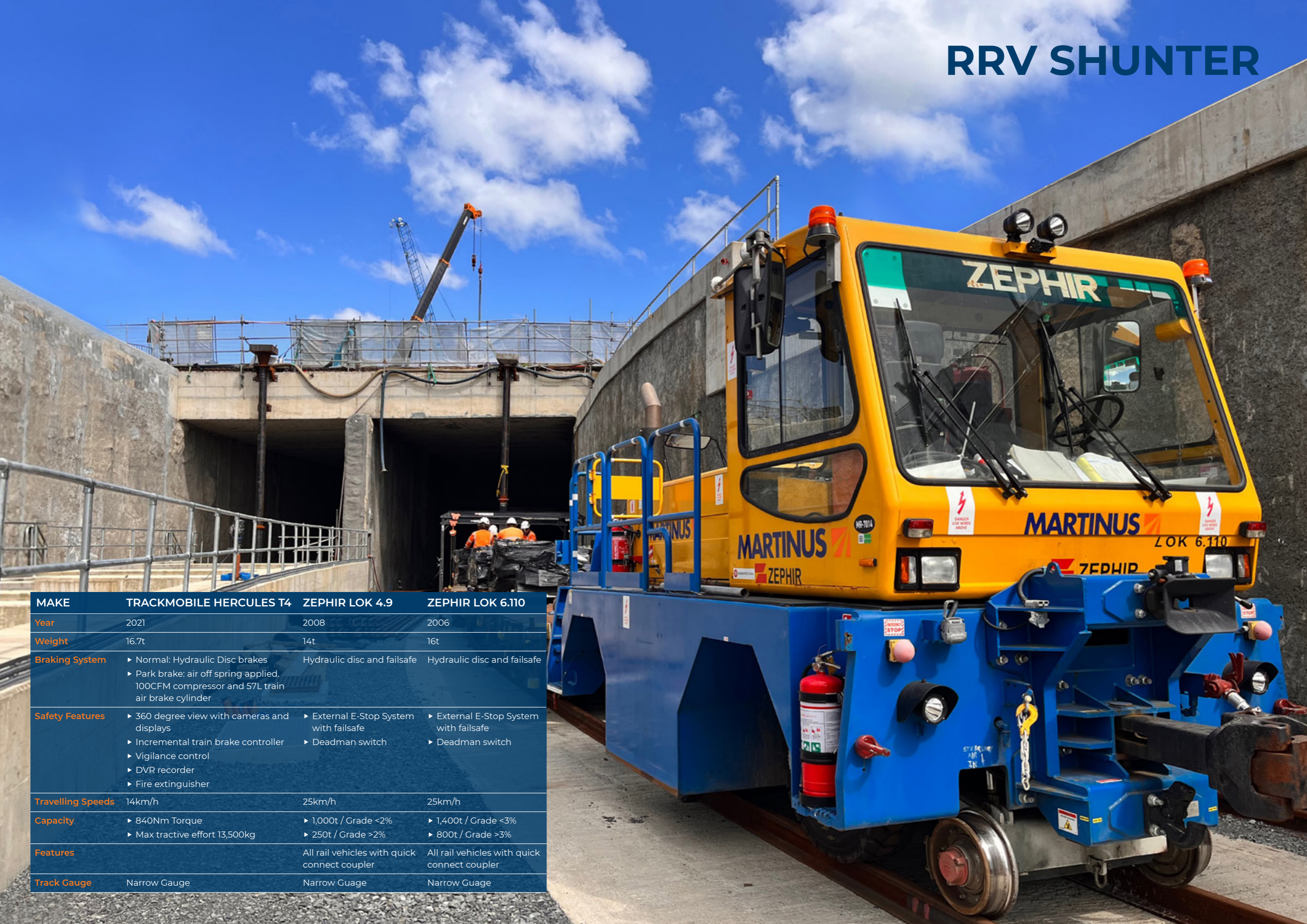


WAGONS

ITEM	WAGONS – BALLAST
Make	CRRC
Year	Built 2020
Weight	22t TARE
Braking System	Pneumatic failsafe system
Safety Features	Remote wireless ballast chute operation
Travelling Speeds	80km/h
Capacity	80t / wagon
Features	Auto couplers
Track Gauge	Narrow gauge rolling stock



RRV SHUNTER



MAKE	TRACKMOBILE HERCULES T4	ZEPHIR LOK 4.9	ZEPHIR LOK 6.110
Year	2021	2008	2006
Weight	16.7t	14t	16t
Braking System	<ul style="list-style-type: none"> ▶ Normal: Hydraulic Disc brakes ▶ Park brake: air off spring applied, 100CFM compressor and 57L train air brake cylinder 	Hydraulic disc and failsafe	Hydraulic disc and failsafe
Safety Features	<ul style="list-style-type: none"> ▶ 360 degree view with cameras and displays ▶ Incremental train brake controller ▶ Vigilance control ▶ DVR recorder ▶ Fire extinguisher 	<ul style="list-style-type: none"> ▶ External E-Stop System with failsafe ▶ Deadman switch 	<ul style="list-style-type: none"> ▶ External E-Stop System with failsafe ▶ Deadman switch
Travelling Speeds	14km/h	25km/h	25km/h
Capacity	<ul style="list-style-type: none"> ▶ 840Nm Torque ▶ Max tractive effort 13,500kg 	<ul style="list-style-type: none"> ▶ 1,000t / Grade <2% ▶ 250t / Grade >2% 	<ul style="list-style-type: none"> ▶ 1,400t / Grade <3% ▶ 800t / Grade >3%
Features		All rail vehicles with quick connect coupler	All rail vehicles with quick connect coupler
Track Gauge	Narrow Gauge	Narrow Gauge	Narrow Gauge

CONTINUOUS TRACK LIFTER

MAKE	HARSCO
Year	Built 2020
Weight	41t
Braking System	Pneumatic failsafe train brake
Safety Features	External E-Stop System with failsafe Deadman Switch
Travelling Speeds	60 km/h (towed)
Capacity	3km/h work speed, not self propelled
Track Gauge	Gauge convertible narrow gauge / standard gauge (currently narrow gauge)



TRACK LAYING POINTS SYSTEM (TLPS) 2500

MAKE	VAIACAR
Year	Overhaul 2021
Weight	55t
Braking System	Hydraulic
Safety Features	E-stops
Travelling Speeds	3.5km/h
Capacity	55m panel / 40t
Track Gauge	Any gauge track panel or switch



PEM-LEM MODULAR PANEL AND TURNOUT INSTALLATION SYSTEM

MAKE	GEISMAR
Year	2018
Weight	PEM: 4.7t each LEM: 4.3t each
Braking System	Hydraulic with failsafe
Safety Features	<ul style="list-style-type: none">▶ Remote control with synchronisation between units for large panel movements▶ Failsafe independent control
Travelling Speeds	3km/h under load
Capacity	<ul style="list-style-type: none">▶ 20t per PEM gantry, 2.9m lift stroke▶ 20t per LEM trolley, 0.35m lift stroke▶ 1 PEM / LEM per 10m of track panel.
Features	4.9m max feet opening, 1.37m slewing stroke
Track Gauge	Narrow gauge and standard gauge track panels and turnouts





TAMPERS

ITEM	09-16 PRODUCTION TAMPER	08-275 UNIMAT SWITCH TAMPER	MK3 HTR150-J PLAIN LINE TAMPER
Make	Plasser	Plasser	Harsco
Year	Overhaul 2020 Built 1991	Overhaul 2022 Built 1998	Built 1989 Overhaul 2009
Weight	42t	42t	37t
Braking System	Hydrostatic and air/release spring applied air	Train Brake System	Pneumatic fail-safe braking
Safety Features	<ul style="list-style-type: none"> ▶ External E-Stop System with failsafe ▶ Cameras front and rear, vigilance control 	<ul style="list-style-type: none"> ▶ External E-Stop system with failsafe ▶ Cameras front and rear ▶ Fire detection ▶ T5 Circuitlink - vigilance and event recorder 	<ul style="list-style-type: none"> ▶ E-stops ▶ Vigilance control
Travelling Speeds	60 km/h	60 km/h	60km/h
Capacity	500m/h	300m/h	Jupiter 2 lift and line system, 400m/h
Features	Fitted with wRails lift and line computer		
Track Gauge	Narrow Gauge	Narrow Gauge	Narrow Gauge

REGULATORS

ITEM	SSP-300 REGULATOR	REGULATOR 4642
Make	Plasser & Theurer	Kershaw
Year	<ul style="list-style-type: none">▶ Built 1985▶ Overhaul 2021	Built 2020
Weight	29t	19t
Braking System	<ul style="list-style-type: none">▶ Pneumatic failsafe train brake	<ul style="list-style-type: none">▶ Hydrostatic braking▶ Air service brake▶ Spring over air emergency park brake
Safety Features	<ul style="list-style-type: none">▶ External E-Stop System with failsafe▶ Cameras front and rear▶ T5 Circuitlink- Vigilance and Event recorder	<ul style="list-style-type: none">▶ External E-Stop System with failsafe▶ Cameras front and rear▶ T5 Circuitlink- Vigilance and Event recorder
Travelling Speeds	<ul style="list-style-type: none">▶ Travel – up to 60km/h▶ Work – up to 20km/h	60km/h
Capacity	Regulated and broomed track @ 600m/hr	Regulated and broomed track @ 400m/hr
Track Gauge	Narrow gauge / standard gauge	Narrow gauge



FLASHBUTT WELDING UNITS



MAKE	EO PATON K950	EO PATON K930	EO PATON K920	HIRAIL TRUCK
Year	2019	2013	2020, 2015	2020
Weight	16.8t	16.8t	16.8t	35t GVM
Braking System	N/A	N/A	N/A	Hydraulic disc brake with failsafe
Safety Features	▶ Auto fire extinguishing system	▶ Auto fire extinguishing system	▶ Auto fire extinguishing system	▶ E-stops, vigilance system ▶ Failsafe brakes
Travelling Speeds	N/A	N/A	N/A	▶ Rail: 25km/h Road ▶ 100km/h
Capacity	Various rail types and steel grades	Various rail types and steel grades	Various rail types and steel grades	1 x 20ft containerised FBW
Track Gauge				Standard gauge and narrow gauge



EXCAVATORS



ITEM	RRV 14T EXCAVATOR
Make	Make Hitachi ZX140W-5
Year	2020
Weight	21.5t
Braking System	Hydraulic disc brakes Railsafe brakes
Safety Features	<ul style="list-style-type: none"> ▶ E-stops ▶ Fail safe brakes
Travelling Speeds	25km/h
Capacity	Attachments: <ul style="list-style-type: none"> ▶ EngCon ▶ Single concrete sleeper grab ▶ Rail threader/grab ▶ Mud Bucket ▶ Forks ▶ Platypus ▶ 4 way octopus/ sleeper grab
Track Gauge	Narrow gauge / standard gauge



RRV BOOM EWP

MAKE	MANITOU160ATJ+ (ART 17 THM)
Year	2019
Weight	12.4t
Braking System	<ul style="list-style-type: none"> ▶ Dynamic braking: hydrostatic bi-directional control on all rail wheels ▶ Park: hydraulically lifted failsafe parking disc brake
Safety Features	<ul style="list-style-type: none"> ▶ E-stops ▶ Safe man system ▶ Height and slew limiting system ▶ Auto engine fire suppression ▶ Can be used for OHC
Travelling Speeds	Rail: 12km/h
Capacity	<ul style="list-style-type: none"> ▶ 400kg load limit in basket ▶ 13m max floor height in all three gauges
Track Gauge	Narrow gauge / standard gauge / broad gauge





CONTACTS

David Van Hoos

61 439 805 330

Plant Office | Workshop

1302 Boundary Road

Wacol QLD 4076

www.martinus.com.au

MARTINUS

Proudly Australian owned and operated since 2005